



Operating Instruction Manual
Installation of CIF Device Driver for ISA
Windows® 7

Hilscher Gesellschaft für Systemautomation mbH

www.hilscher.com

DOC110511OI01EN | Revision 1 | English | 2011-05 | Released | Public

Table of Contents

1	INTRODUCTION.....	3
1.1	Introduction About this Manual	3
1.1.1	List of Revisions	3
1.2	Legal Notes.....	4
1.2.1	Copyright	4
1.2.2	Important Notes	4
1.2.3	Exclusion of Liability	5
1.2.4	Warranty	5
1.2.5	Export Regulations	6
1.2.6	Registered Trademarks.....	6
2	HOW TO INSTALL THE DRIVER FOR A CIF ISA CARD UNDER WINDOWS® 7? ...	7
3	APPENDIX	21
3.1	List of Figures	21
3.2	List of Tables	21
3.3	Contacts.....	22

1 Introduction

1.1 Introduction About this Manual

This manual provides information ...

1.1.1 List of Revisions

Index	Date	Chapter	Revision
1	2011-05-31	All	Created

Table 1: List of Revisions

1.2 Legal Notes

1.2.1 Copyright

© Hilscher, 2011, Hilscher Gesellschaft für Systemautomation mbH

All rights reserved.

The images, photographs and texts in the accompanying material (user manual, accompanying texts, documentation, etc.) are protected by German and international copyright law as well as international trade and protection provisions. You are not authorized to duplicate these in whole or in part using technical or mechanical methods (printing, photocopying or other methods), to manipulate or transfer using electronic systems without prior written consent. You are not permitted to make changes to copyright notices, markings, trademarks or ownership declarations. The included diagrams do not take the patent situation into account. The company names and product descriptions included in this document may be trademarks or brands of the respective owners and may be trademarked or patented. Any form of further use requires the explicit consent of the respective rights owner.

1.2.2 Important Notes

The user manual, accompanying texts and the documentation were created for the use of the products by qualified experts, however, errors cannot be ruled out. For this reason, no guarantee can be made and neither juristic responsibility for erroneous information nor any liability can be assumed. Descriptions, accompanying texts and documentation included in the user manual do not present a guarantee nor any information about proper use as stipulated in the contract or a warranted feature. It cannot be ruled out that the user manual, the accompanying texts and the documentation do not correspond exactly to the described features, standards or other data of the delivered product. No warranty or guarantee regarding the correctness or accuracy of the information is assumed.

We reserve the right to change our products and their specification as well as related user manuals, accompanying texts and documentation at all times and without advance notice, without obligation to report the change. Changes will be included in future manuals and do not constitute any obligations. There is no entitlement to revisions of delivered documents. The manual delivered with the product applies.

Hilscher Gesellschaft für Systemautomation mbH is not liable under any circumstances for direct, indirect, incidental or follow-on damage or loss of earnings resulting from the use of the information contained in this publication.

1.2.3 Exclusion of Liability

The software was produced and tested with utmost care by Hilscher Gesellschaft für Systemautomation mbH and is made available as is. No warranty can be assumed for the performance and flawlessness of the software for all usage conditions and cases and for the results produced when utilized by the user. Liability for any damages that may result from the use of the hardware or software or related documents, is limited to cases of intent or grossly negligent violation of significant contractual obligations. Indemnity claims for the violation of significant contractual obligations are limited to damages that are foreseeable and typical for this type of contract.

It is strictly prohibited to use the software in the following areas:

- for military purposes or in weapon systems;
- for the design, construction, maintenance or operation of nuclear facilities;
- in air traffic control systems, air traffic or air traffic communication systems;
- in life support systems;
- in systems in which failures in the software could lead to personal injury or injuries leading to death.

We inform you that the software was not developed for use in dangerous environments requiring fail-proof control mechanisms. Use of the software in such an environment occurs at your own risk. No liability is assumed for damages or losses due to unauthorized use.

1.2.4 Warranty

Although the hardware and software was developed with utmost care and tested intensively, Hilscher Gesellschaft für Systemautomation mbH does not guarantee its suitability for any purpose not confirmed in writing. It cannot be guaranteed that the hardware and software will meet your requirements, that the use of the software operates without interruption and that the software is free of errors. No guarantee is made regarding infringements, violations of patents, rights of ownership or the freedom from interference by third parties. No additional guarantees or assurances are made regarding marketability, freedom of defect of title, integration or usability for certain purposes unless they are required in accordance with the law and cannot be limited. Warranty claims are limited to the right to claim rectification.

1.2.5 Export Regulations

The delivered product (including the technical data) is subject to export or import laws as well as the associated regulations of different countries, in particular those of Germany and the USA. The software may not be exported to countries where this is prohibited by the United States Export Administration Act and its additional provisions. You are obligated to comply with the regulations at your personal responsibility. We wish to inform you that you may require permission from state authorities to export, re-export or import the product.

1.2.6 Registered Trademarks

Windows® 7 are registered trademarks of Microsoft Corporation.

All other mentioned trademarks are property of their respective legal owners.

2 How to install the Driver for a CIF ISA Card under Windows® 7?

Requirements

The CIF Device Driver has to be already installed on the used PC. If this is not the case yet, then run the setup program **CIF Device Driver Setup.exe**. This setup program is on the DVD in the folder \Driver\DPMWin_2K_XP_VISTA_7. It installs the driver and the required INF files.

To operate a CIF Communication Interface ISA in a PC, the PC has to provide a free ISA memory area of 2 Kbyte in the memory range C0000 to FF7FF respectively 8 Kbyte in the memory range C0000 to FDFFF. If the CIF should be operated with interrupt, then the PC has to provide additionally a free ISA interrupt.

To carry out the installation steps you need to know if you use a CIF with 2 KByte dual-port memory or a CIF with 8 KByte dual-port memory. Information about the dual port memory size is in the booklet at the according device drawing.

Installation Steps

Do the following steps to install a **CIF Communication Interface ISA**, e. g. to reserve the memory range and if necessary one interrupt at the operating system for the CIF:

1. Open Start



2. Search and start the Device Manager

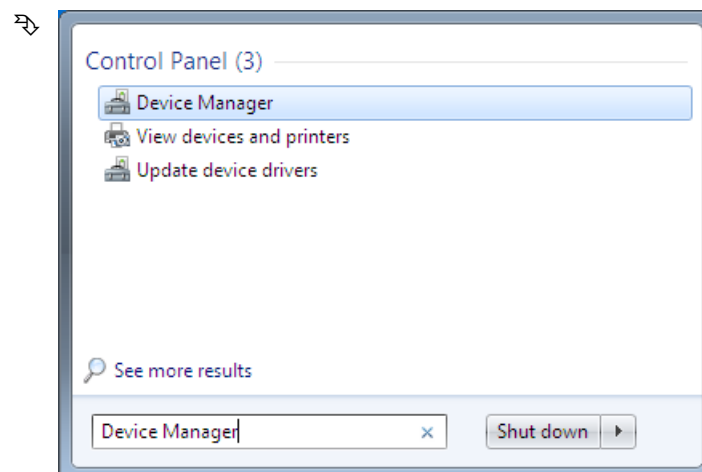


Figure 1: Search Field

- Click on Device Manager.
- The Device Manager starts.

3. Add legacy hardware
 - In the Device Manager click on any element of the tree, e. g. select the top element of the tree.
 - Select from the menu **Action > Add legacy hardware**.

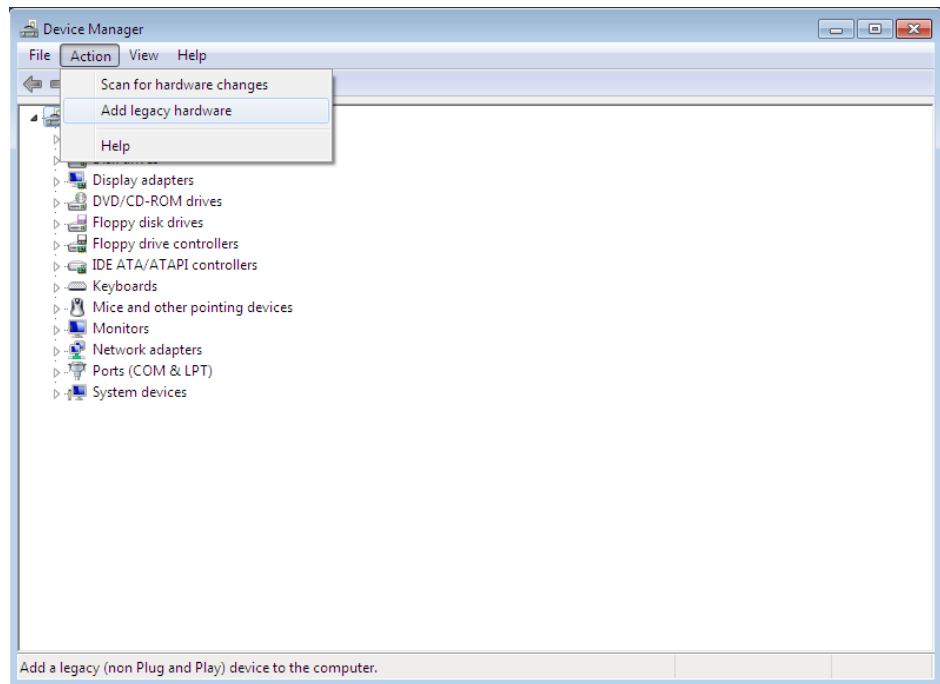


Figure 2: Device Manager

- The Hardware Wizard start.

4. Hardware Wizard

- Click **Next**.

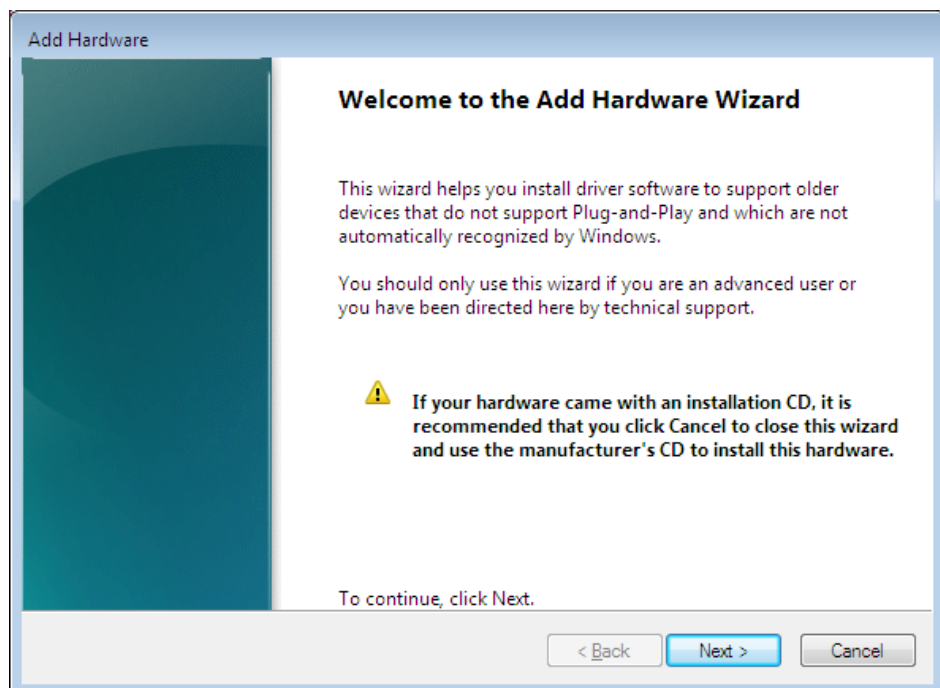


Figure 3: Hardware Wizard (1)

- Select **Install the hardware that I manually select from a list (Advanced)**.

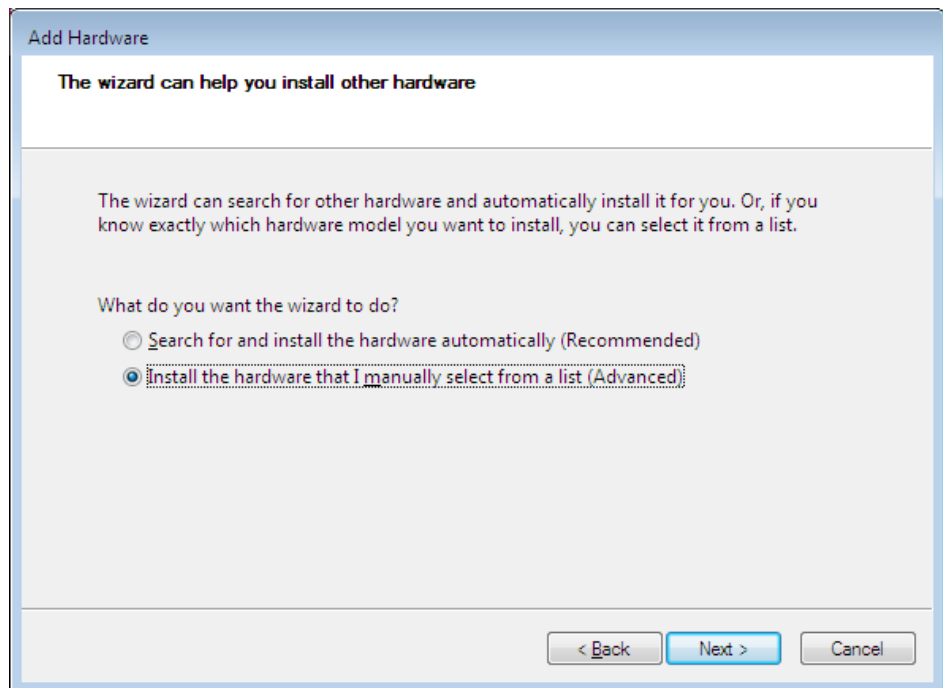


Figure 4: Hardware Wizard (2)

- Click **Next**.
- Select **Show All Devices**.

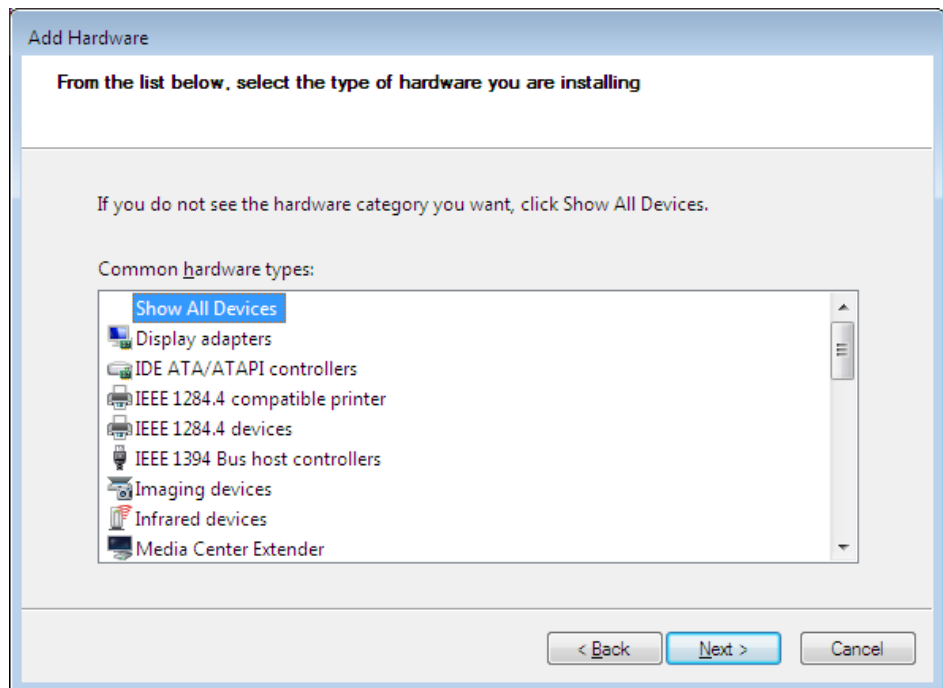


Figure 5: Hardware Wizard (3)

- Click **Next**.

- Wait until windows has created the device list. This can take a while.
- Select from the list of **Manufacturer > Hilscher GmbH**.
- Then select from the list **Model > CIF 10/30/40/104 (ISA-2KByte)**, if you use a CIF with 2 KByte dual-port memory.

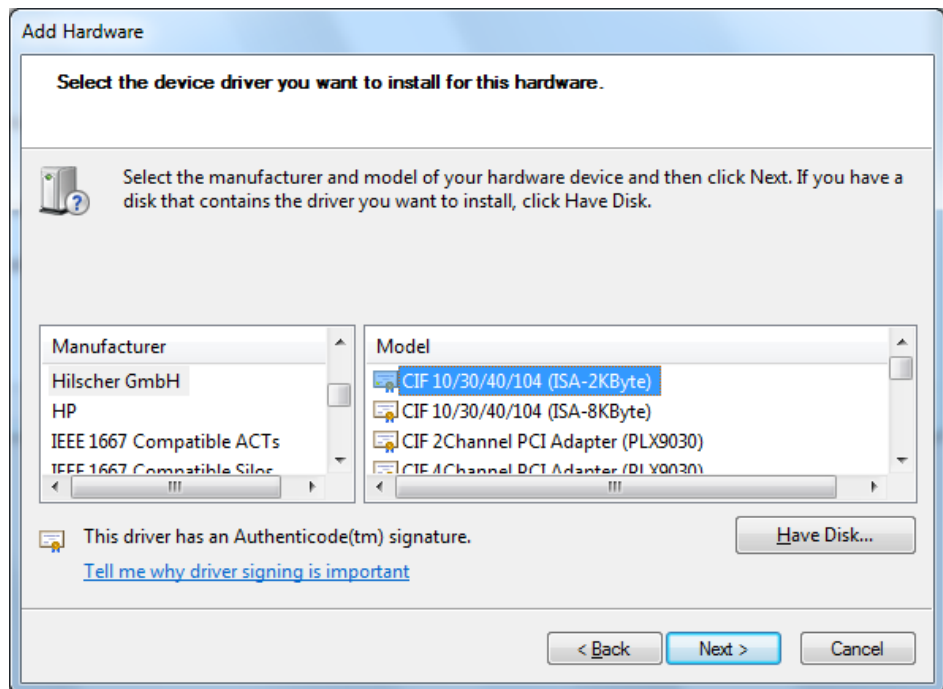


Figure 6: Hardware Wizard (4) – 2 Kbyte

or

Select **Model > CIF 10/30/40/104 (ISA-8KByte)**, if you use a CIF with 8 KByte dual-port memory.

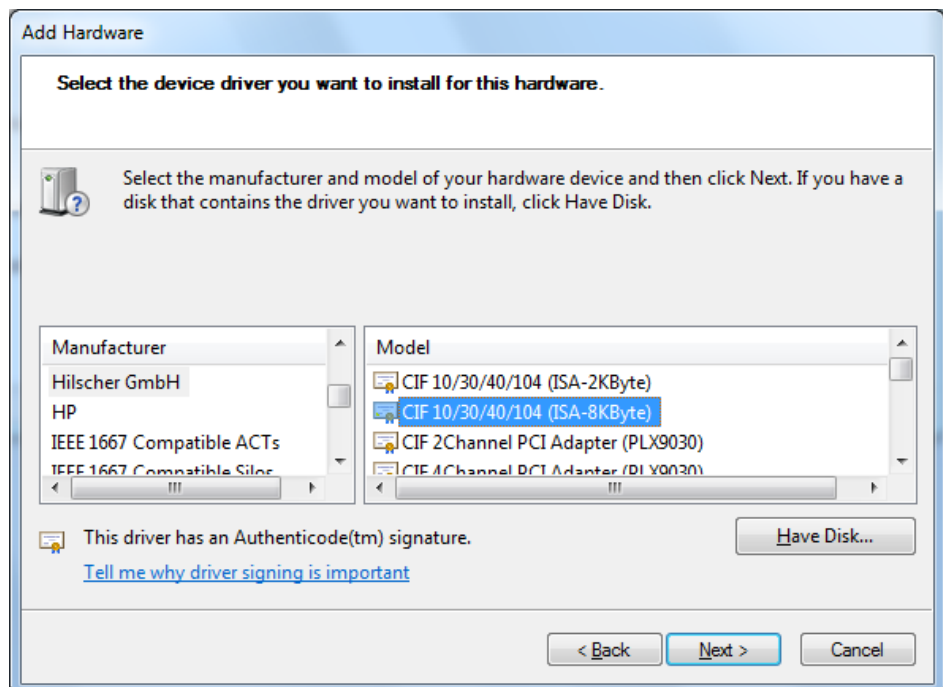


Figure 7: Hardware Wizard (4) – 8 Kbyte

- Click **Next**.

➤ Click **Next**.

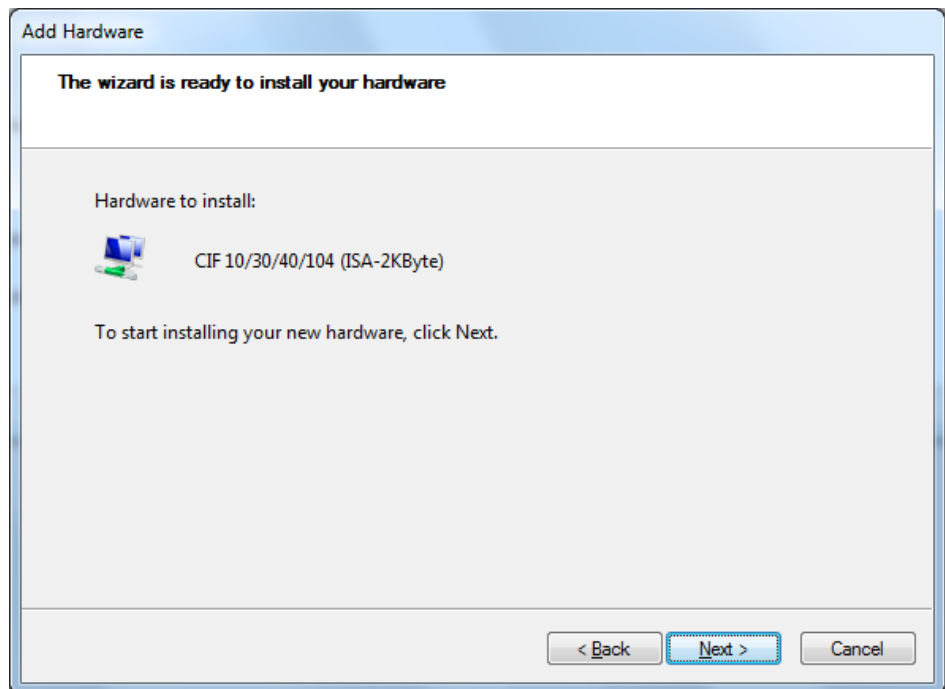


Figure 8: Hardware Wizard (5) – 2 Kbyte

OR

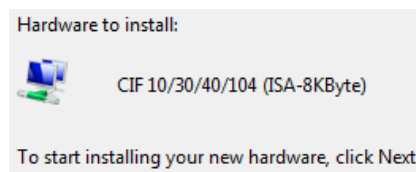


Figure 9: Hardware Wizard (5) – 8 Kbyte

5. Install
 - If the Windows Security asks, then click **Install**.
 - The CIF Device Driver is installed.
6. Finish or change resources
 - If you use the standard settings on the CIF Communication Interface, that is memory address CA000 is jumpered and no interrupt jumper is set on the CIF (polling), then click **Finish**.

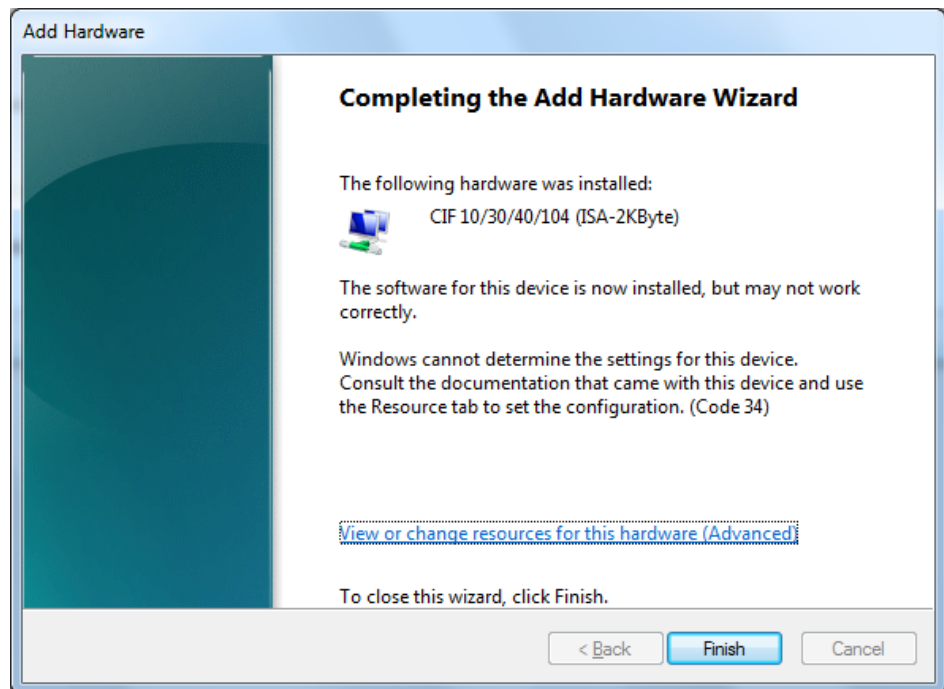


Figure 10: Hardware Wizard (6) – Completing

- If you have clicked on Finish, then restart the PC.
- If the CIF Communication Interface PC/104 is jumpered for a memory address other than D0000 and no interrupt jumper is set on the CIF (polling), then click **View of change resources for this hardware (Advanced)**. Continue with section *Select Memory Range for Polling (Basic Configuration 0001)* on page 13.
- If the CIF Communication Interface PC/104 is to be used with interrupt then click **View of change resources for this hardware (Advanced)**. Continue with section *Select Memory Range and Interrupt (Basic Configuration 0002)* on page 16.

Select Memory Range for Polling (Basic Configuration 0001)

- Click **Set Configuration Manually**.

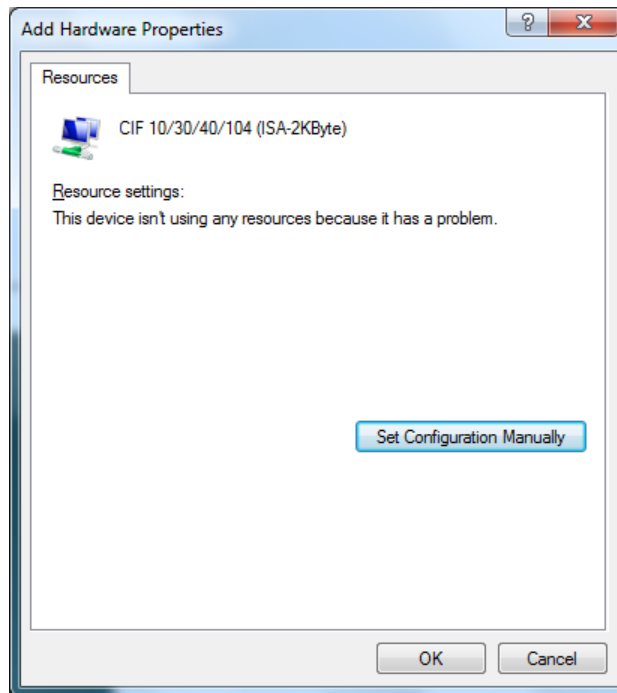


Figure 11: Resources – Set Configuration Manually

- Uncheck **Use automatic settings**.
- At **Settings based on** select **Basic configuration 0001**.
- Select **Memory Range**.

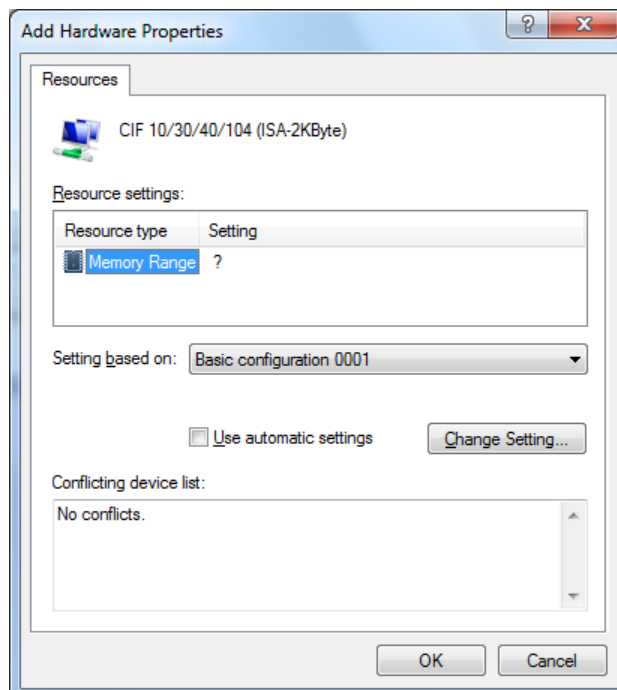


Figure 12: Basic Configuration 0001

- Click **Change Settings**.

- Set the memory range: e. g. range D0000-D07FF for a CIF with 2 Kbyte respectively range D0000-D1FFF for a CIF with 8 Kbyte.

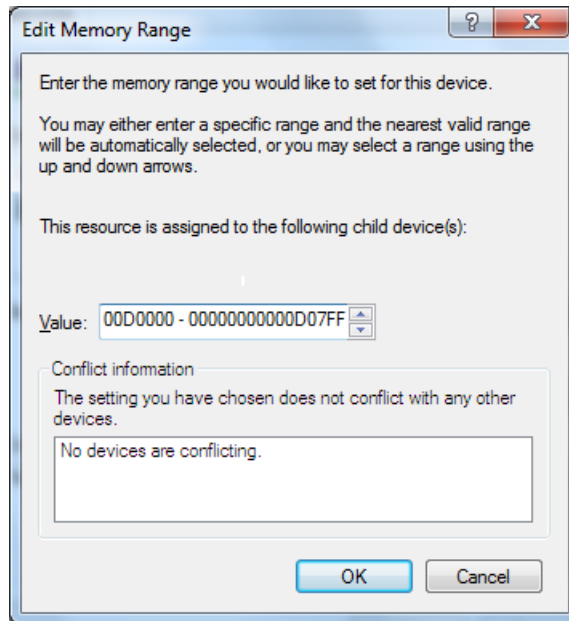


Figure 13: Basic Configuration 0001 – Edit Memory Range

- Click **OK**.

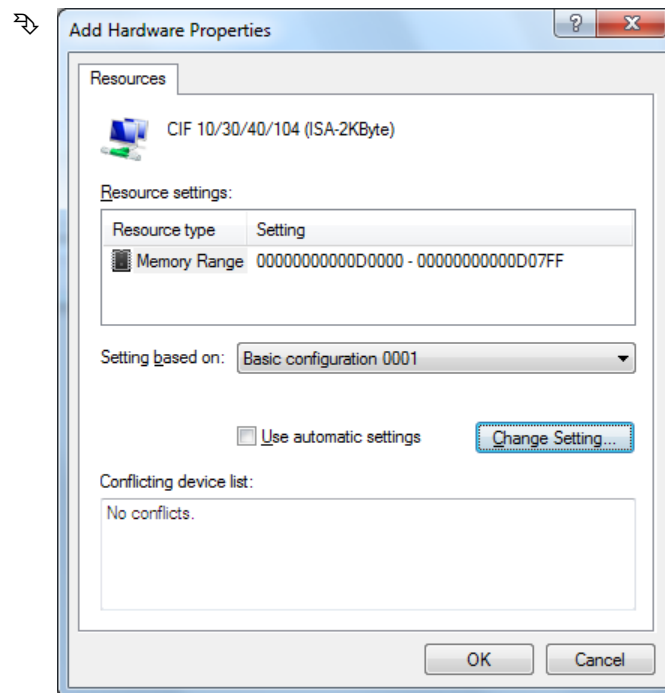


Figure 14: Basic Configuration 0001

- Click **OK**.

- Click **Finish**.

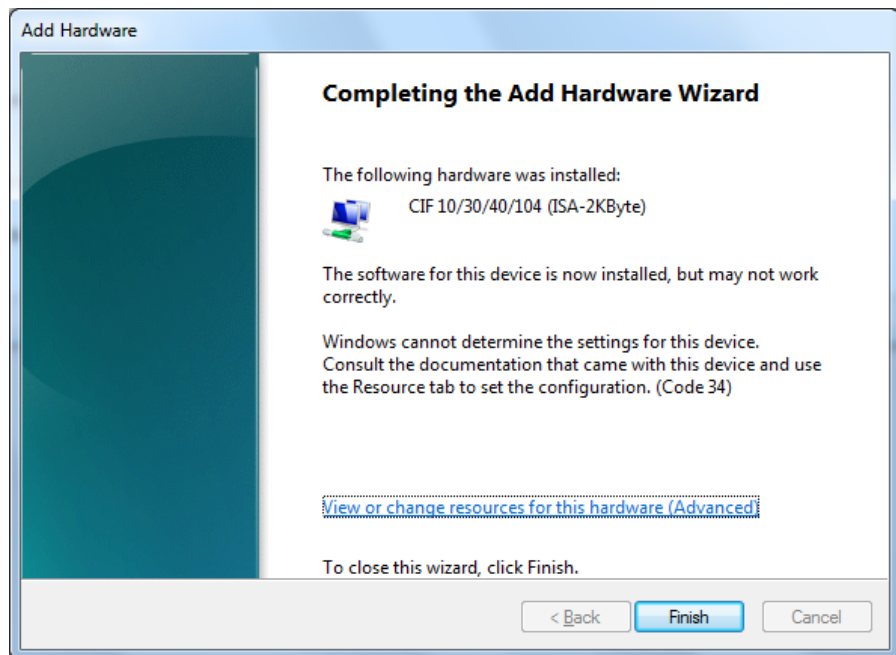


Figure 15: Hardware Wizard Basic Configuration 0001 - Completing

- Restart the PC.

Select Memory Range and Interrupt (Basic Configuration 0002)

- Click **Set Configuration Manually**.

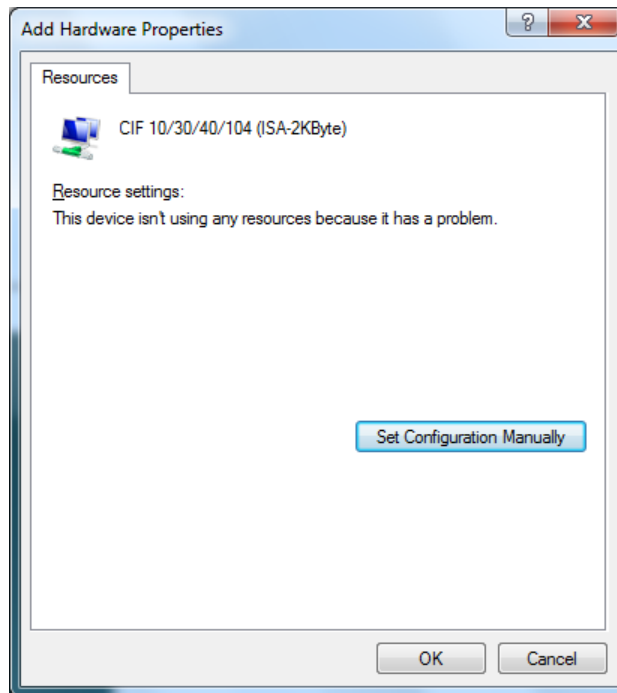


Figure 16: Resources – Set Configuration Manually

- Uncheck **Use automatic settings**.
- At **Settings based on** select **Basic configuration 0002**.
- Select **Memory Range**.

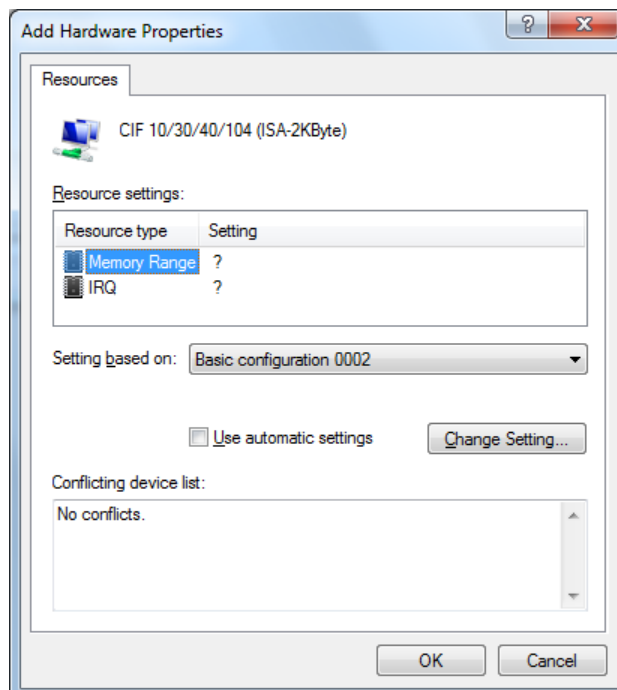


Figure 17: Basic Configuration 0002

- Click **Change Settings**.

- Set the memory range: e. g. range D0000-D07FF for a CIF with 2 Kbyte respectively range D0000-D1FFF for a CIF with 8 Kbyte.

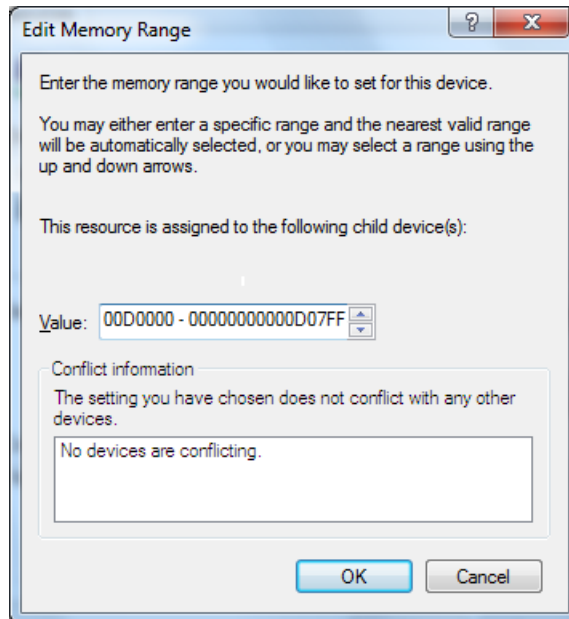


Figure 18: Basic Configuration 0002 – Edit Memory Range

- Click **OK**.
- Select **IRQ**.

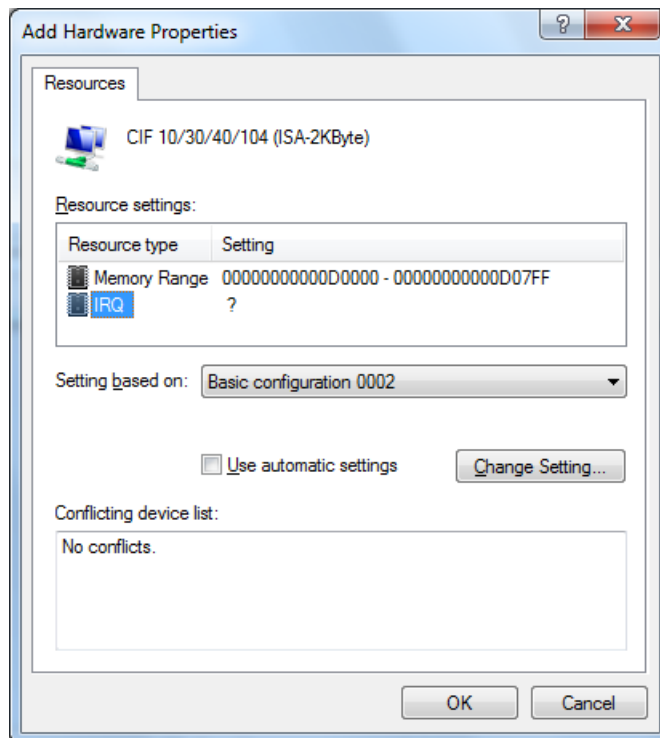


Figure 19: Basic Configuration 0002

- Click **Change Settings**.

- Set the interrupt number: e. g. interrupt 11.

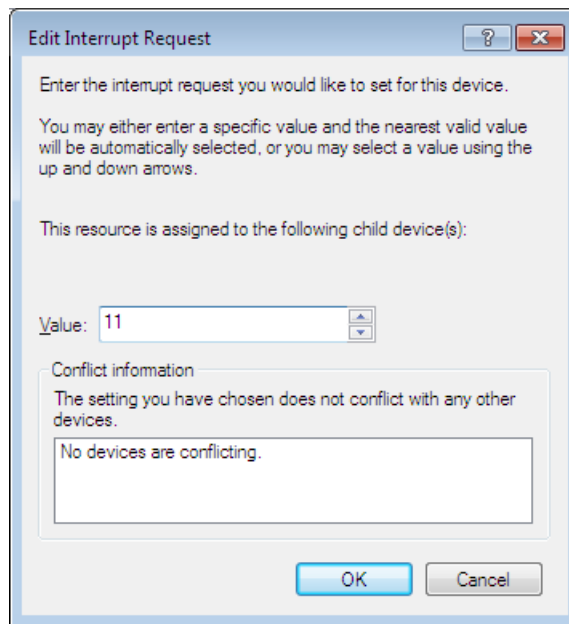


Figure 20: Basic Configuration 0002 – Edit Interrupt Request

- Click **OK**.

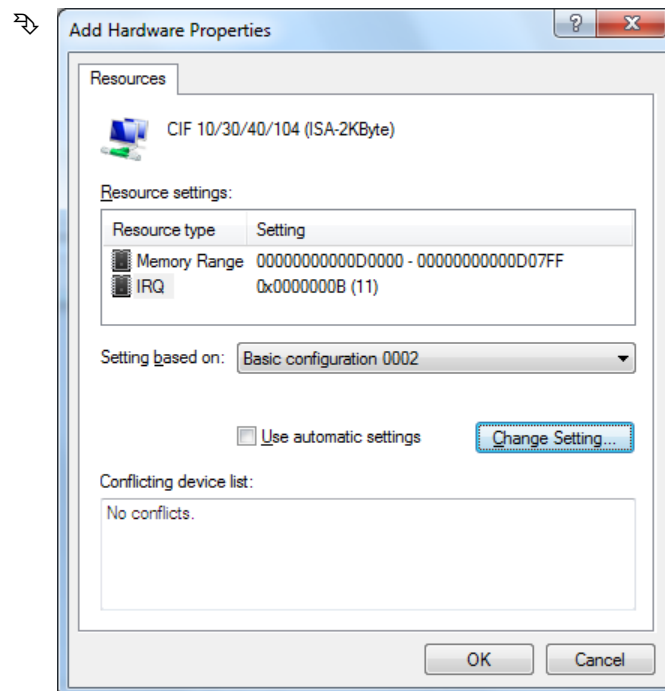


Figure 21: Basic Configuration 0002

- Click **OK**.

- Click **Finish**.

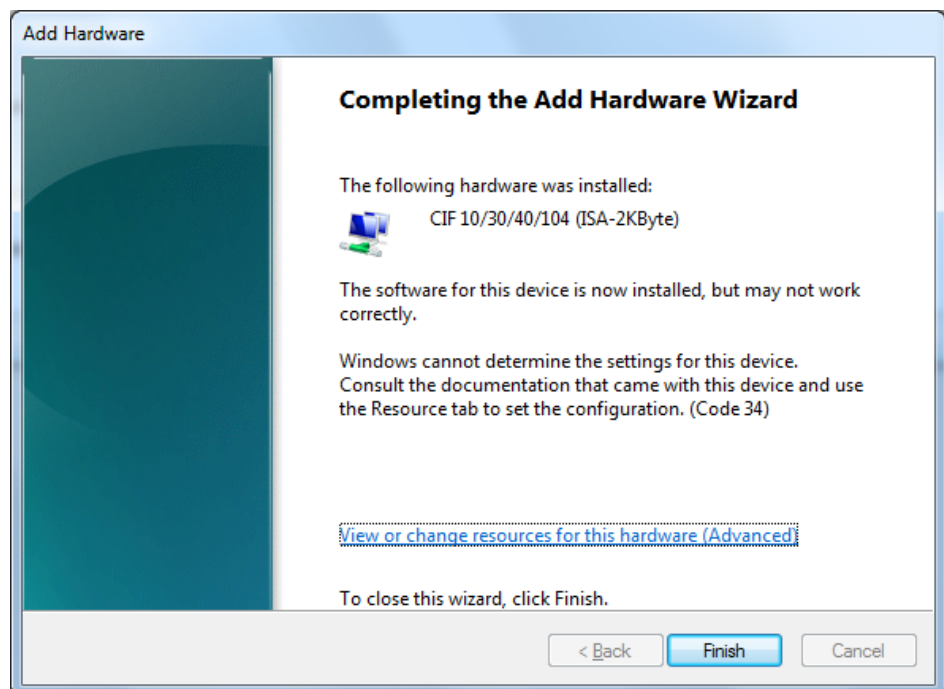


Figure 22: Hardware Wizard Basic Configuration 0002 - Completing

- Restart the PC.

Check in the Device Manager if the CIF Communication Interface ISA is installed properly

- Open the **Device Manager**.
- Check, if the display in the **Device Manager** shows for **CIF 10/30/40/104 (ISA-2KByte)**

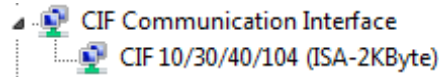


Figure 23: CIF ISA 2 Kbyte in the Device Manager

or for **CIF 10/30/40/104 (ISA-8KByte)**

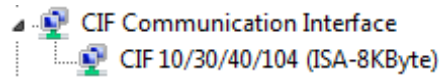


Figure 24: CIF ISA 8 Kbyte in the Device Manager

no exclamation mark.

If an exclamation mark is shown with **CIF 10/30/40/104 (ISA-2KByte)**

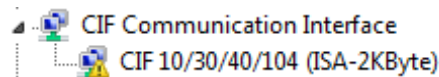


Figure 25: CIF ISA 2 Kbyte in the Device Manager with Exclamation Mark

or with **CIF 10/30/40/104 (ISA-8KByte)**

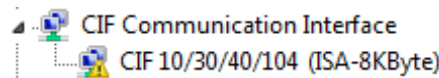


Figure 26: CIF ISA 8 Kbyte in the Device Manager with Exclamation Mark

- If an exclamation mark is shown with **CIF 10/30/40/104 (ISA-2KByte)** or **CIF 10/30/40/104 (ISA-8KByte)** then either a resource conflict exists or the requested resources are not available.
- Select from the context menu on **CIF 10/30/40/104 (ISA-2KByte)** or **CIF 10/30/40/104 (ISA-8KByte)** item **Properties**.
- Select the tab **Resources**.
- Change the setting for the memory range respectively the interrupt with **Set Configuration Manually**, as described in section *Select Memory Range for Polling (Basic Configuration 0001)* on page 13 or in section *Select Memory Range and Interrupt (Basic Configuration 0002)* on page 16.

3 Appendix

3.1 List of Figures

Figure 1: Search Field	7
Figure 2: Device Manager	8
Figure 3: Hardware Wizard (1)	8
Figure 4: Hardware Wizard (2)	9
Figure 5: Hardware Wizard (3)	9
Figure 6: Hardware Wizard (4) – 2 Kbyte	10
Figure 7: Hardware Wizard (4) – 8 Kbyte	10
Figure 8: Hardware Wizard (5) – 2 Kbyte	11
Figure 9: Hardware Wizard (5) – 8 Kbyte	11
Figure 10: Hardware Wizard (6) – Completing	12
Figure 11: Resources – Set Configuration Manually	13
Figure 12: Basic Configuration 0001	13
Figure 13: Basic Configuration 0001 – Edit Memory Range	14
Figure 14: Basic Configuration 0001	14
Figure 15: Hardware Wizard Basic Configuration 0001 - Completing	15
Figure 16: Resources – Set Configuration Manually	16
Figure 17: Basic Configuration 0002	16
Figure 18: Basic Configuration 0002 – Edit Memory Range	17
Figure 19: Basic Configuration 0002	17
Figure 20: Basic Configuration 0002 – Edit Interrupt Request	18
Figure 21: Basic Configuration 0002	18
Figure 22: Hardware Wizard Basic Configuration 0002 - Completing	19
Figure 23: CIF ISA 2 Kbyte in the Device Manager	20
Figure 24: CIF ISA 8 Kbyte in the Device Manager	20
Figure 25: CIF ISA 2 Kbyte in the Device Manager with Exclamation Mark	20
Figure 26: CIF ISA 8 Kbyte in the Device Manager with Exclamation Mark	20

3.2 List of Tables

Table 1: List of Revisions	3
----------------------------	---

3.3 Contacts

Headquarters

Germany

Hilscher Gesellschaft für
Systemautomation mbH
Rheinstrasse 15
65795 Hattersheim
Phone: +49 (0) 6190 9907-0
Fax: +49 (0) 6190 9907-50
E-Mail: info@hilscher.com

Support

Phone: +49 (0) 6190 9907-99
E-Mail: de.support@hilscher.com

Subsidiaries

China

Hilscher Systemautomation (Shanghai) Co. Ltd.
200010 Shanghai
Phone: +86 (0) 21-6355-5161
E-Mail: info@hilscher.cn

Support

Phone: +86 (0) 21-6355-5161
E-Mail: cn.support@hilscher.com

France

Hilscher France S.a.r.l.
69500 Bron
Phone: +33 (0) 4 72 37 98 40
E-Mail: info@hilscher.fr

Support

Phone: +33 (0) 4 72 37 98 40
E-Mail: fr.support@hilscher.com

India

Hilscher India Pvt. Ltd.
New Delhi - 110 025
Phone: +91 11 40515640
E-Mail: info@hilscher.in

Italy

Hilscher Italia srl
20090 Vimodrone (MI)
Phone: +39 02 25007068
E-Mail: info@hilscher.it

Support

Phone: +39 02 25007068
E-Mail: it.support@hilscher.com

Japan

Hilscher Japan KK
Tokyo, 160-0022
Phone: +81 (0) 3-5362-0521
E-Mail: info@hilscher.jp

Support

Phone: +81 (0) 3-5362-0521
E-Mail: jp.support@hilscher.com

Korea

Hilscher Korea Inc.
Suwon, 443-734
Phone: +82 (0) 31-695-5515
E-Mail: info@hilscher.kr

Switzerland

Hilscher Swiss GmbH
4500 Solothurn
Phone: +41 (0) 32 623 6633
E-Mail: info@hilscher.ch

Support

Phone: +49 (0) 6190 9907-99
E-Mail: ch.support@hilscher.com

USA

Hilscher North America, Inc.
Lisle, IL 60532
Phone: +1 630-505-5301
E-Mail: info@hilscher.us

Support

Phone: +1 630-505-5301
E-Mail: us.support@hilscher.com