

# Software




Intime  
IntervalZero  
Windows CE  
VxWorks  
Linux  
Windows

**cifX/netX Device Driver**



netX Diagnostic and Remote Access



Intime  
IntervalZero  
Windows CE  
VxWorks  
Linux  
Windows

**CIF Device Driver**



rcX



Second Stage Boot Loader



```
/*! HIF IR
typedef en
{
    DRV_DIO_
    DRV_DIO_
    DRV_DIO_
    DRV_DIO_
    DRV_DIO_
}
```

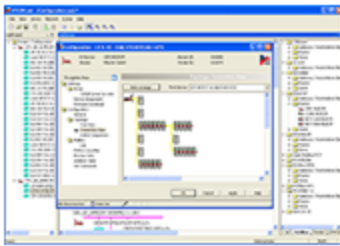
netX Peripheral Driver

```
/** cifX API
/** cifX API *****
lRet = xChannelIORead(ptAp
if(lRet == CIFX_NO_ERROR){
    ptAppData->fOutputDataVa
}
else{
```

LFW Host Examples



## Maintenance Firmware



## SYCON.net



## netX Configuration Tool

IP-Adresse	Geräte-ID	Geräteart	IP-Adresse	Protokoll	Gerät	Netzwerk	...
10-02-02-01-01	102-10	FastEthernet	0.0.0.0	DCP	DCE/CE	DCE	...
10-02-02-01-02	102-10	FastEthernet	0.0.0.0	DCP	DCE/CE	DCE	...
10-02-02-01-03	Fasteth...	FastEthernet	0.0.0.0	NetS...	-	-	...
10-02-02-01-04	0/0	IFT (Interf...	192.168.0.1	NetS...	-	-	...
10-02-02-01-05	Fasteth...	FastEthernet	0.0.0.0	NetS...	-	-	...
10-02-02-01-06	Fasteth...	FastEthernet	0.0.0.0	NetS...	-	-	...
10-02-02-01-07	163991	MSRP (S...	192.168.0.10	NetS...	-	-	...
10-02-02-01-08	0/0	Interfacer	192.168.0.1	DCP	DCE/CE	C...	...
10-02-02-01-09	Fasteth...	FastEthernet	0.0.0.0	NetS...	-	-	...

## Ethernet Device Configuration

netX Studio ©2014



netX Studio



Tag List Editor



Bootwizard